

Medical care during the COVID-19 epidemic

3. information for the offshore wind industry from the WINDEAcare® organization
26 March 2020

1 The question of a mass casualty of sick persons

In the last few days, a lot of questions have been raised about MCI/E (mass casualty of injured and sick persons) and COVID-19.

A MCI is defined (according to DIN 13050) as *an emergency with a large number of injured or sick persons as well as other injured or affected persons, which cannot be dealt with the existing and usable provision of the rescue service from the emergency service area* and it is absolutely correct to prepare for it.

A large number of sick persons can also be recorded with this definition as MCI or MCIE.

The emergency paramedics of Johanniter-Unfall-Hilfe eV (**JUH**) used in offshore projects and the rescue helicopters of Northern HeliCopter GmbH (**NHC**) have therefore already made conceptual and material provisions to act collectively in a MCI situation under a single management.

With regard to the current pandemic caused by the Corona virus, the probability of a MCI/E situation must be discussed and differentiated. Even if the general and social impacts of the pandemic are still partially underestimated, the situation for the offshore industry must be assessed differently:

According to the current state of knowledge, the course of severe forms of infection (i.e. those with severe symptoms, high fever, oxygen requirement or necessary ventilation) is always characterized by a course of disease over several days with slowly increasing symptom progression. In addition, the severe course ("only" or perhaps still) is found in a single-digit percentage of all patients.

In relation to Germany and the whole world, these figures are very dramatic.

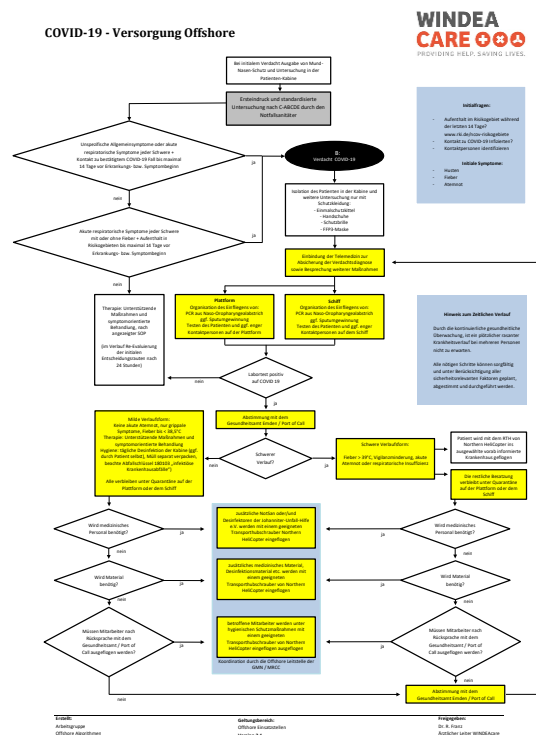
For employees in the offshore industry, however, it is currently not to be expected that, without omens, a large number of patients will acutely require emergency medical treatment *at the same time* and will *simultaneously* require ventilation or intensive care.

As a rule, all offshore projects are supervised by excellently trained and well-equipped medical personnel such as emergency paramedics. These on-site medical specialists are able to identify ill persons at an early stage and initiate an evacuation *before* they show severe symptoms and require intensive care

The presented algorithm, especially for COVID-19 suspected cases in the areas which are taken care of by the WINDEAcare partners, shows the possible options for action.

In this tiered system, the available resources from transport and supply capacity ensure that medical care even in the event of a larger number of suspected COVID-19 cases - always in close communication with the operators and the health authorities.

Even if it is necessary to further develop MCI planning for offshore wind in the future, air rescue for the offshore wind industry is ensured in the current situation. This is done with a dedicated rescue helicopter each for the North Sea and the Baltic Sea as well as another transport helicopter, also equipped for infection patients, by the Northern HeliCopter GmbH alone.



2 Requirements and operational management

All medical services from the WINDEAcare network can be obtained from the

EMERGENCY CONTROL CENTRE OFFSHORE WIND FARMS

the *Gesellschaft für maritimes Notfallmanagement mbH*, operated in cooperation with the *Johanniter-Unfall-Hilfe e.V.*:

E-Mail: operator.ventusmedic@johanniter.de

Phone: +49 421 800 580 10

Emergency: +49 421 675 909

